

Prevent Protect Promote Prevent Protect Promote Prevent P
ent Protect Promote Prevent Protect Promote Prevent Protec
Prevent Protect Promote Prevent Protect Promote Prevent P

HIV/AIDS

UTAH – 2008



George A. Usher, MPA - Program Manager

Leslie A. Clark – Information Analyst

Utah Department of Health • Bureau of Communicable Disease Control • HIV/AIDS Surveillance Program

Epidemiology

January - December 2008

- New AIDS cases: 66
 - Same as December 2007 (66)
- New HIV cases: 106
 - 16% increase from December 2007 (91)

Epidemiology: Incidence

January- December 2008

- Of the 172 persons with HIV/AIDS:
 - 87% are male (150)
 - 13% are female (22)
 - 58% were between the ages of 20-39 (99)
 - 37% were between the ages of 40-59 (63)

Incidence and Exposure: Men

January - December 2008

- Most common:
 - Men who have sex with men (60%)
- Second most common:
 - Men who have sex with men and inject drugs (17%)

*Fifteen percent of men did not disclose risk.

Incidence and Exposure: Women

January - December 2008

- Most commonly reported:
 - Heterosexual contact (50%)
- Second most common reported:
 - Injecting drug use (32%)

*Eighteen percent of women did not disclose risk.

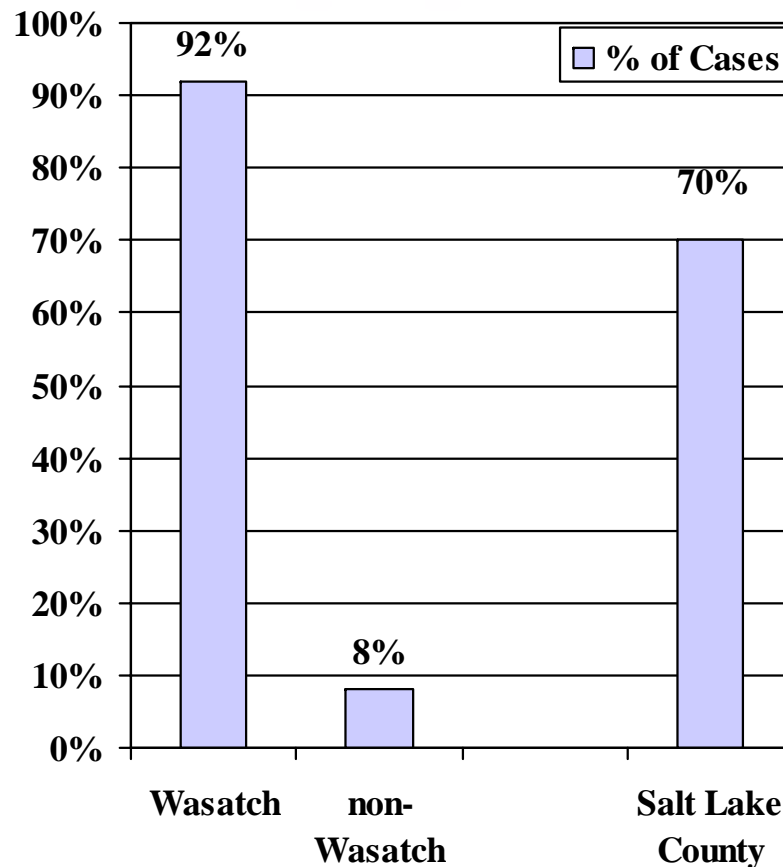
Incidence: Reporting Sources

January – December 2008

- Of these 106 persons testing HIV positive during 2008:
 - 34% were reported through counseling and testing sites
 - 26% were reported through laboratory reports
 - 26% were reported through physician office visits
 - 14% were reported through other sources

Incidence: by Residence at Diagnosis

January - December 2008



- 92% of 2008 cases live along the Wasatch Front
- 70% of 2008 cases live in Salt Lake County
- The majority of those living in rural areas, come to Salt Lake City for medical treatment.

Incidence: Gender/Ethnicity

January – December 2008

Race/Ethnicity	Male	Female
White	73%	59%
Hispanic	17%	23%
Black	4%	14%
Asian/Pacific Islander	1%	4%
Native American	0%	0%
Unknown	4%	0%
Total	100%	100%

Ethnic minorities comprise 17% of Utah's Population but equal **25%** of those newly diagnosed with HIV or AIDS in 2008

Epidemiology: Cumulative

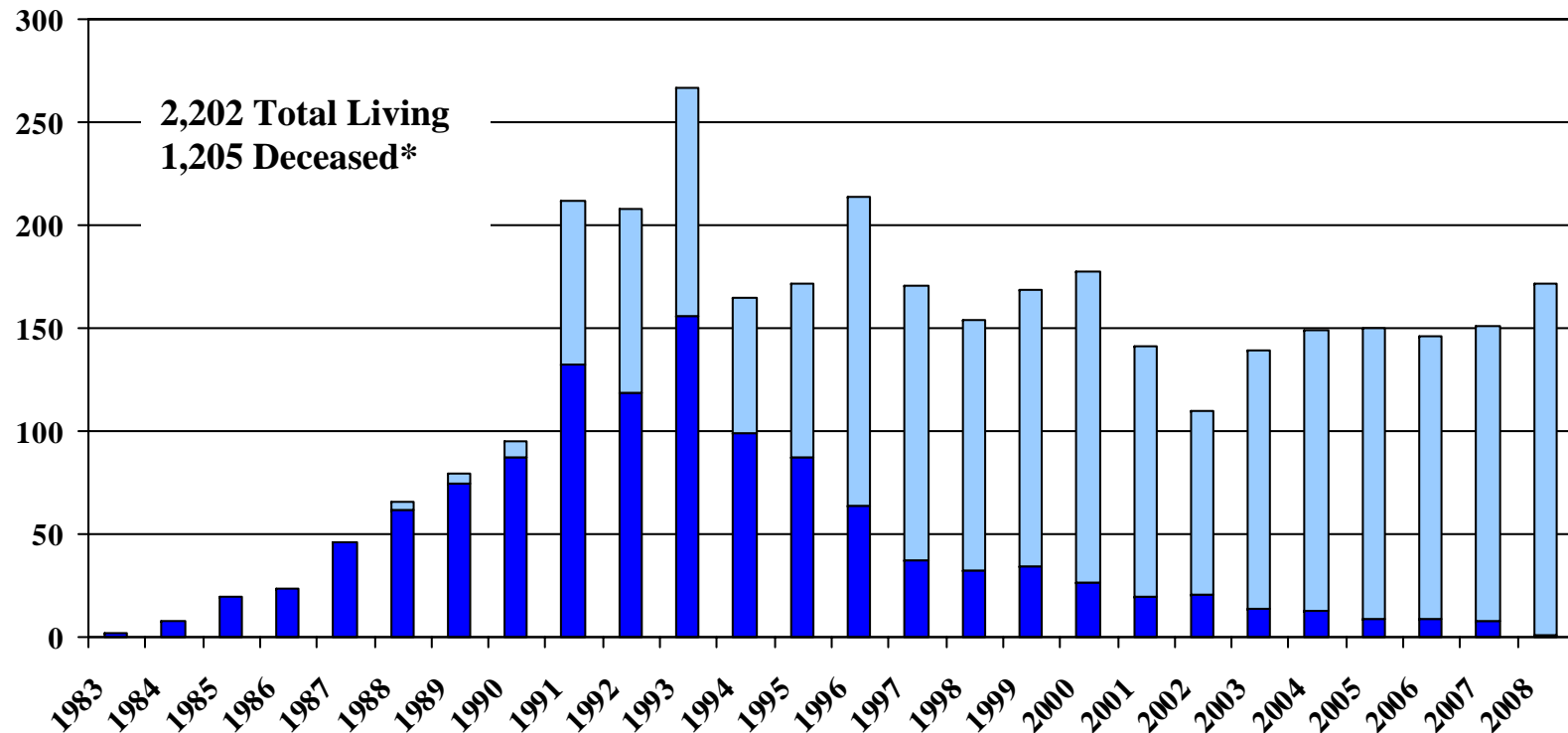
December 2008

AIDS cases: 2,403

HIV (non-AIDS): 1,004

Utah HIV/AIDS Cases

Through December 2008 by year of Report



*Includes 40 deaths of HIV-positive individuals



Utah Department of Health • Bureau of Communicable Disease Control • HIV/AIDS Surveillance Program • 12/2008 Data

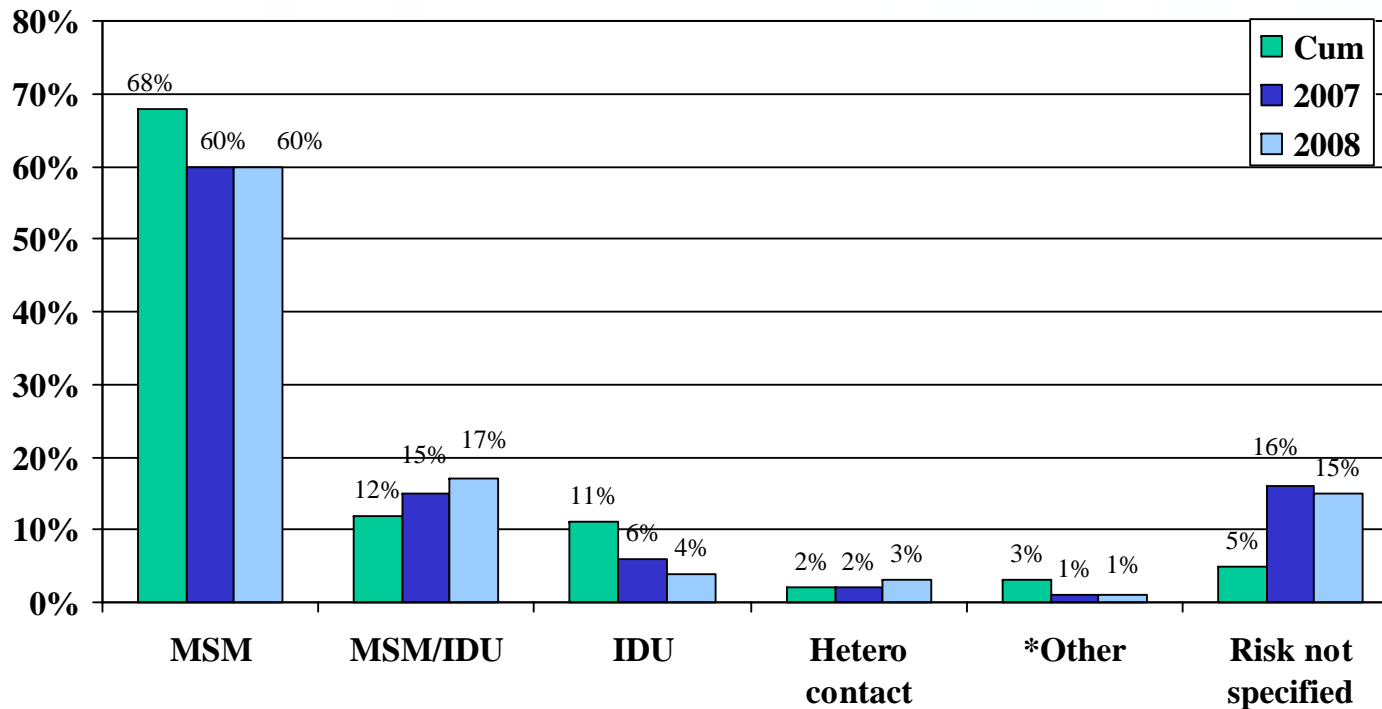
Promote Prevent Protect Promote Prevent Protect Promote Prevent
Promote Prevent Protect Promote Prevent Protect Promote Prevent
Promote Prevent Protect Promote Prevent Protect Promote Prevent

Cumulative by Demographic

December 2008

	AIDS	HIV
Gender	Male (89%) Female (11%)	Male (83%) Female (17%)
Age	30-39 (44%) 40-49 (26%)	20-29 (37%) 30-39 (36%)
Race	White (78%) Hispanic (13%) Black (7%)	White (70%) Hispanic (17%) Black (10%)
Exposure	MSM (61%) IDU (16%) MSM/IDU (10%) Hetero (6%)	MSM (54%) MSM/IDU (12%) IDU (10%) Hetero (9%) Not Specified (13%)

Immerging Trends: Among Men by Risk December 2008

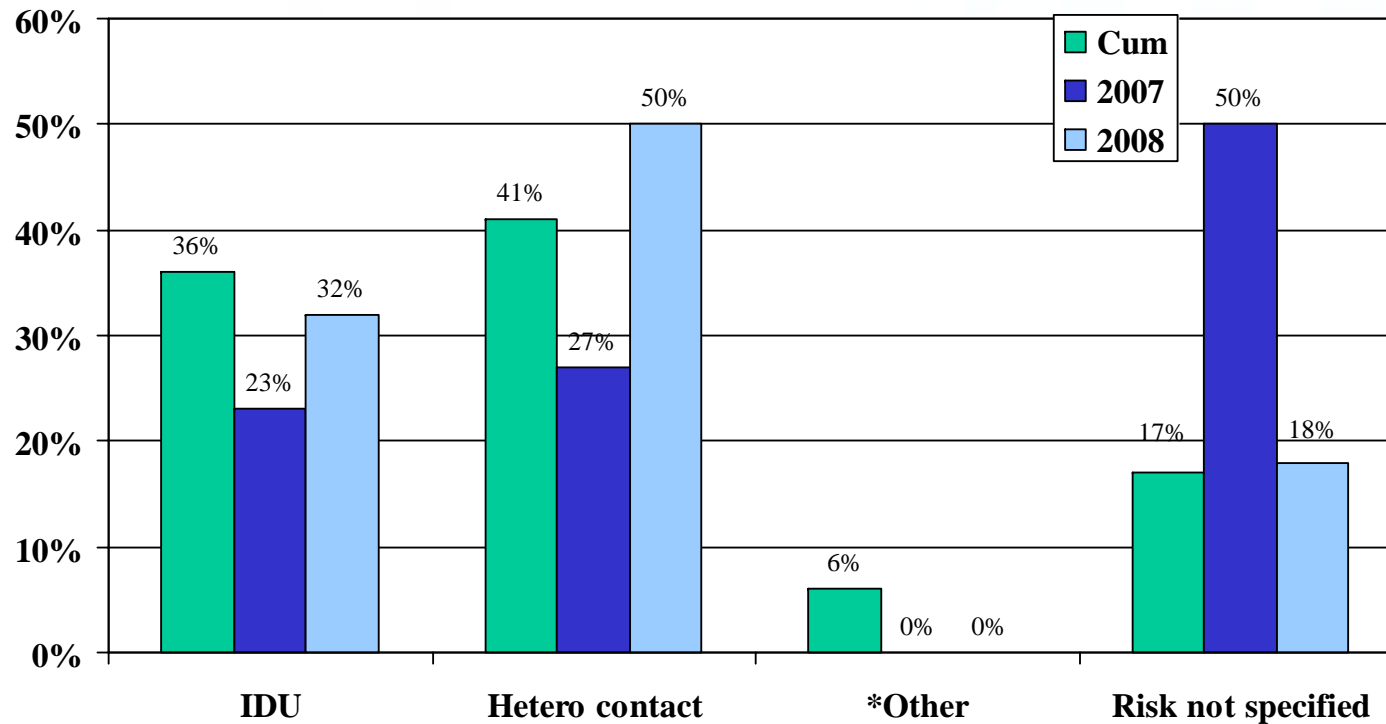


Cumulative = 2,976 cases, 2007 = 125 cases, 2008= 150 cases

Percentages may not equal 100 due to rounding

*Other includes hemophilia, transfusion/transplant and mother with HIV/AIDS risk

Immerging Trends: Among Women by Risk December 2008

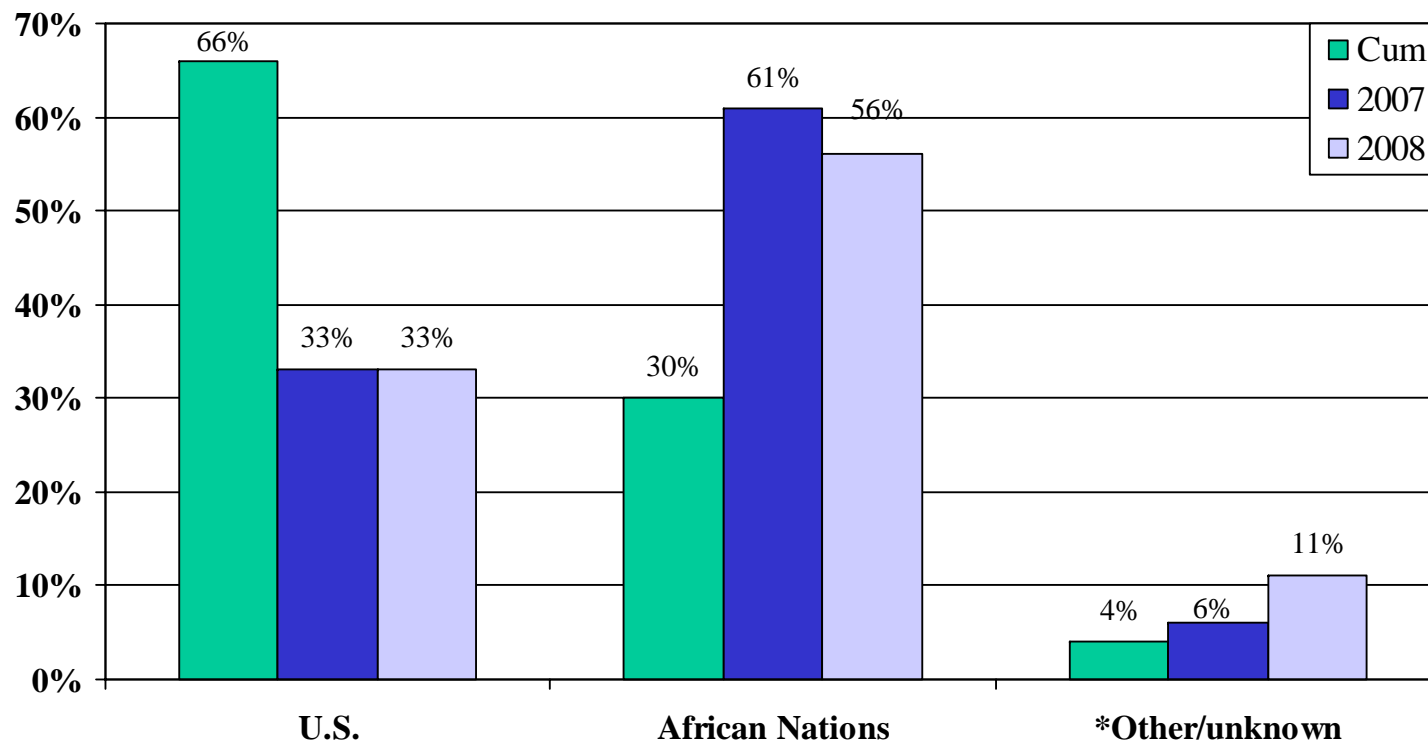


Cumulative = 431 cases, 2007 = 26 cases, 2008= 22 cases

Percentages may not equal 100 due to rounding

*Other includes transfusion/transplant and mother with HIV/AIDS risk

HIV/AIDS Among Black Persons by Country of Origin December 2008



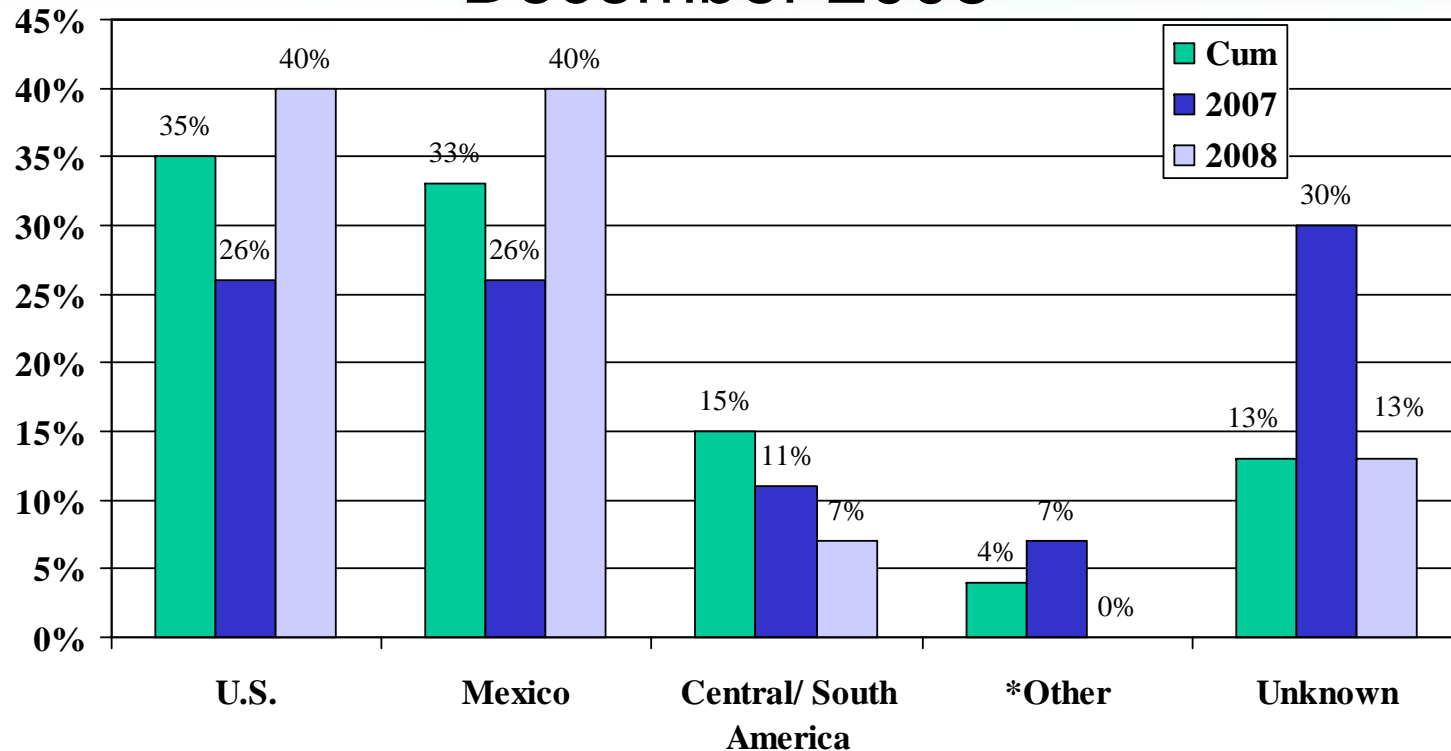
Cumulative = 275 cases, 2007 = 18 cases, 2008 = 9

Percentages may not equal 100 due to rounding

* Other includes Antigua, Brazil, Canada, Germany, Haiti, Jamaica, and Virgin Islands



HIV/AIDS Among Hispanic Persons by Country of Origin December 2008



Cumulative = 461 cases, 2006 = 35 cases, 2008 = 26 cases

Percentages may not equal 100 due to rounding

*Other includes Cuba, Dominican Republic, Kenya, Puerto Rico, Spain, and Virgin Islands

Prevent Protect Promote Prevent Protect Promote Prevent P
ent Protect Promote Prevent Protect Promote Prevent Prote
Prevent Protect Promote Prevent Protect Promote Prevent P

THE END

