

SSP Quarter 2 Report

October 1, 2020—December 31, 2020



Syringe Service Providers (SSPs) operating in Utah are required by law to report this information. Currently, five SSPs operate in the state of Utah: The Utah Harm Reduction Coalition, One Voice Recovery, Utah Naloxone, Soap 2 Hope, and Southeast Utah Health Department. Utah Naloxone provides quarterly data to The Utah Department of Health (UDOH). Data from that organization is not reflected in monthly counts, only quarterly totals. Utah Naloxone provides UDOH with program-level data about SSP metrics, but does not report data for naloxone or reversals, referrals, or HCV/HIV testing.

Data in this report is from Quarter 2 of the fiscal year, October 1 2020 to December 31 2020. Data from Quarter 1 of the fiscal year, July 1 2020 to September 30 2020, is shown for reference.

Table 1. Syringe Service Metrics by month for Quarter 2

Metric	October	November	December	October - December 2020†	July - September 2020†
	N	N	N	N	N
Syringes In	73952	69330	89336	306795	282546
Syringes Disposed Elsewhere*	838	320	862	34102	26355
Syringes Out	79106	75578	94651	401820	348127
Return Ratio**	1.07	1.09	1.06	1.31	1.23
Return Ratio (with disposed)	1.06	1.09	1.05	1.18	1.13
Total Unique Clients Served	701	666	715	1433	1507
Total Encounters	1169	1028	1177	5127	3591
New Participants	208	137	123	468	500

* Self reported proper disposal

** 'Return Ratio', is calculated by Syringes Out divided by Syringes In

† Quarterly totals include data from Utah Naloxone for all metrics except, 'Total Unique Clients Served'

Table 2. Naloxone Distribution and Reported Reversals by month for Quarter 2

Naloxone	October	November	December	October - December 2020	July - September 2020
Doses Distributed	479	215	246	940	651
Reversals Reported	12	14	6	32	22

Reversals are defined as survival of an individual who experienced an opioid overdose when one or more naloxone doses were administered.

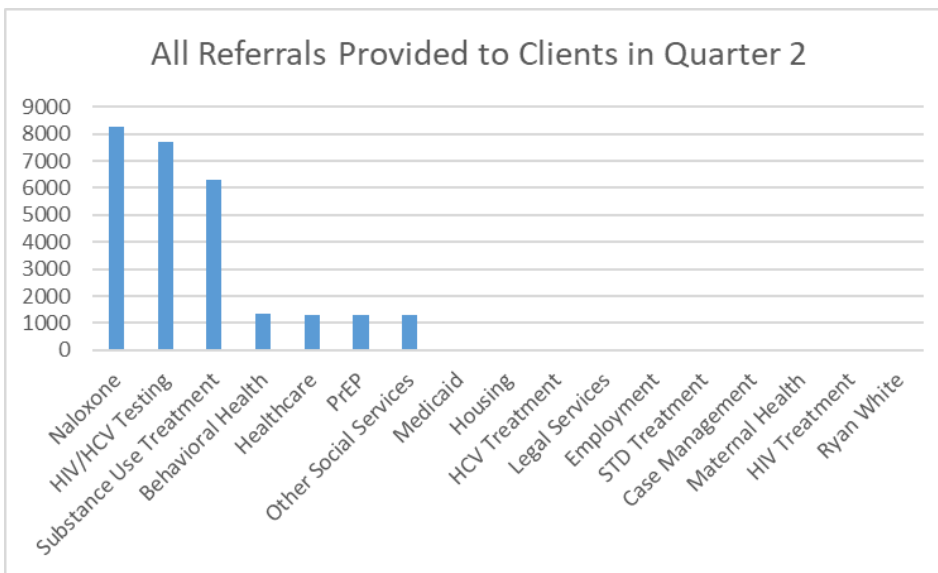
At each SSP encounter, participants are asked If they were the recipient of an overdose reversal with naloxone, or if they performed a reversal for someone else in the time since their last visit. It is possible a participant could report more than one reversal per month, or encounter. Participants are given the option to decline to answer this question.

Table 3. Referrals by month for Quarter 2

Referrals Quarter 2	Written	Verbal	Active
	N	N	N
Substance Use Treatment	4282	1919	98
HIV/HCV Testing	4275	3325	125
Naloxone	4276	3357	623
Behavioral Health	1293	36	0
Medicaid	1	6	0
Healthcare	1297	12	0
Maternal Health	0	0	0
Legal Services	3	0	0
Employment	0	1	0
Housing	0	6	0
Other Social Services	1298	2	0
STD Treatment	0	1	0
HIV Treatment	0	0	0
HCV Treatment	1	3	0
Ryan White	0	0	0
Case Management	0	1	0
PrEP	1300	1	0

Substance Use Treatment, HIV/HCV Testing, and Naloxone referrals are required referrals at each encounter for all providers. Providers may offer written, verbal, and/or active (“warm hand off”) referrals for each service.

Figure 1. Referrals Provided in Quarter 2



During SSP encounters, providers have the opportunity to assess client’s specific needs and offer referrals to other resources or services. The table and figure display what referral data is collected from SSP agencies. Providers may offer other referrals to services not listed here. No additional referrals to services were recorded for the Quarter 2 period.

Table 4. Fentanyl Test Strips Distributed and Responses Provided in Quarter 2

Fentanyl Test Strips in Quarter 2	
	N
Strips distributed	2450
Post-use surveys submitted	164
Responses where test strips were used	116
Number of test strips reported positive	66
Positivity rate	56.90%

Between October 1, 2020 and December 31, 2020, SSPs distributed 2,450 fentanyl test strips during 1,006 client encounters.

An in-depth report on fentanyl test strips can be found on the syringe exchange website.

Table 5. Gender of Participants in Quarter 2

Gender	October - December 2020 %*	October - December 2020 N	July - September 2020 %**	July - September 2020 N
Male	59.3%	757	60.7%	915
Female	40.1%	512	38.4%	578
Trans/Nonconforming	0.2%	3	0.5%	7
Declined	0.4%	5	0.5%	7

Table 6. Race of Participants in Quarter 2

Race	October - December 2020 %	October - December 2020 N	July - September 2020 %	July - September 2020 N
Black	2.9%	37	3.1%	47
White	82.2%	1049	82.6%	1245
Native Hawaiian/Pacific Islander	1.6%	20	1.3%	19
Asian	0.7%	9	0.5%	7
American Indian/Alaskan Native	2.6%	33	2.7%	40
Multiple	2.0%	26	1.9%	28
Declined/Unknown	4.9%	63	4.8%	72
Other	3.1%	40	3.3%	49

Figure 2. Gender of Participants in Quarter 2

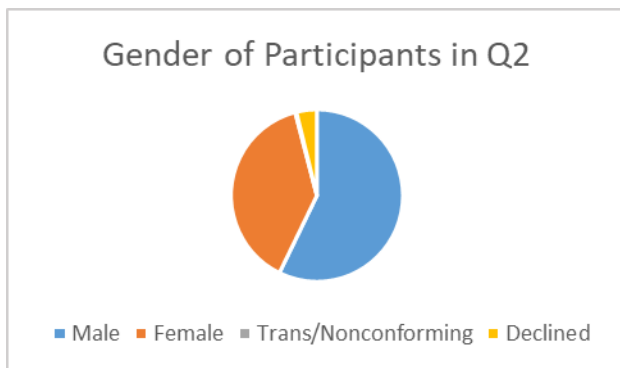


Figure 3. Race of Participants in Quarter 2

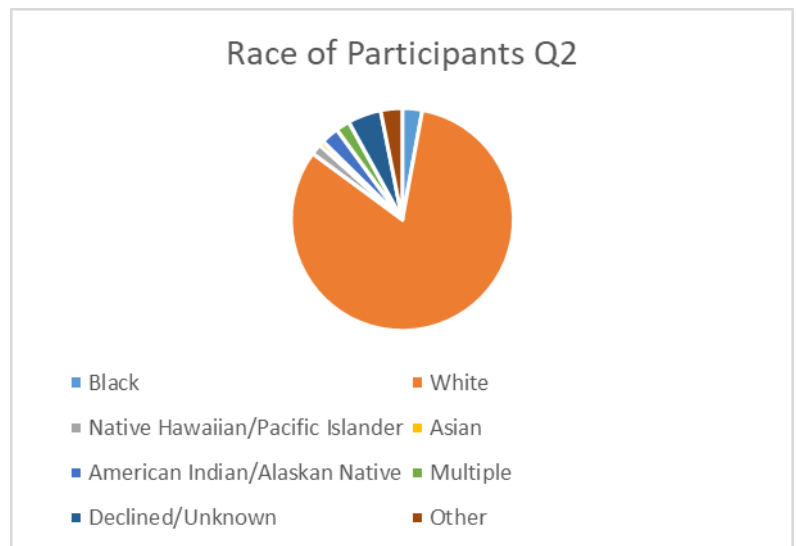


Table 7. HCV and HIV Testing by month for Quarter 2

HCV Testing*	October	November	December	October - December 2020	July - September 2020
Reported HCV positive at intake	15	10	14	39	42
Tested	6	11	13	30	51
Tested Positive	1	5	3	9	10
Positivity Rate	16.7%	45.5%	23.1%	30.0%	19.6%
HIV Testing*	October	November	December	October - December 2020	July - September 2020
Reported HIV positive at intake	1	2	1	4	5
Tested	4	13	16	33	48
Tested Positive	0	1	0	1	2
Positivity Rate	0.0%	7.7%	0.0%	3.0%	4.2%

Three SSPs offer on-site rapid tests for Hepatitis C (HCV) and Human Immunodeficiency Virus (HIV). All tests reflected in the table are rapid tests. The SSPs that do not offer testing are required to provide referrals for HCV and HIV testing elsewhere.

Table 8. HCV and HIV Linkage to care in Quarter 2

HCV Testing*	October	November	December	October - December 2020
Reported HCV positive at intake	15	10	14	39
HCV positive clients linked to care at intake	8	4	6	18
Percentage linked to care	53.3%	40.0%	42.9%	46.2%
HIV Testing*	October	November	December	October - December 2020
Reported HIV positive at intake	1	2	1	4
HIV positive clients linked to care at intake	1	0	1	2
Percentage linked to care	100.0%	0.0%	100.0%	50.0%

When participants enroll in the syringe service program they are asked about HCV and HIV status at intake. If they are not in care, SSPs can link them to care or offer additional resources. Some clients decline to be linked to care for various reasons.

Table 9. Substances Used in the Past 30 days Reported at Intake by month for Quarter 2

Substance	October	November	December	October - December 2020	July - September 2020
	N	N	N	N	N
New Clients	208	137	123	468	500
Heroin	134	86	83	303	355
Crack/Cocaine	24	22	13	59	346
Meth/Speed	163	97	96	356	79
Cannabis/Marijuana	55	32	41	128	53
Alcohol	39	18	14	71	41
Tobacco	14	15	10	39	27
Benzodiazepines	14	9	13	36	18
Prescription Pain Medicine	8	7	5	20	13
Methadone	0	5	0	5	9
Spice	4	3	0	7	9
Suboxone	7	13	4	24	7
Subutex	1	3	1	5	5
Gabapentin	1	3	2	6	2
Fentanyl	2	4	4	10	-

New clients are asked a series of intake questions at their first visit. The new participants are asked to report the substances used in the past 30 days. If an individual has used more than one substance, they mark each substance used.

Figure 4. Proportion of New Participants who Reported Using Heroin and Meth by month for Quarter 2

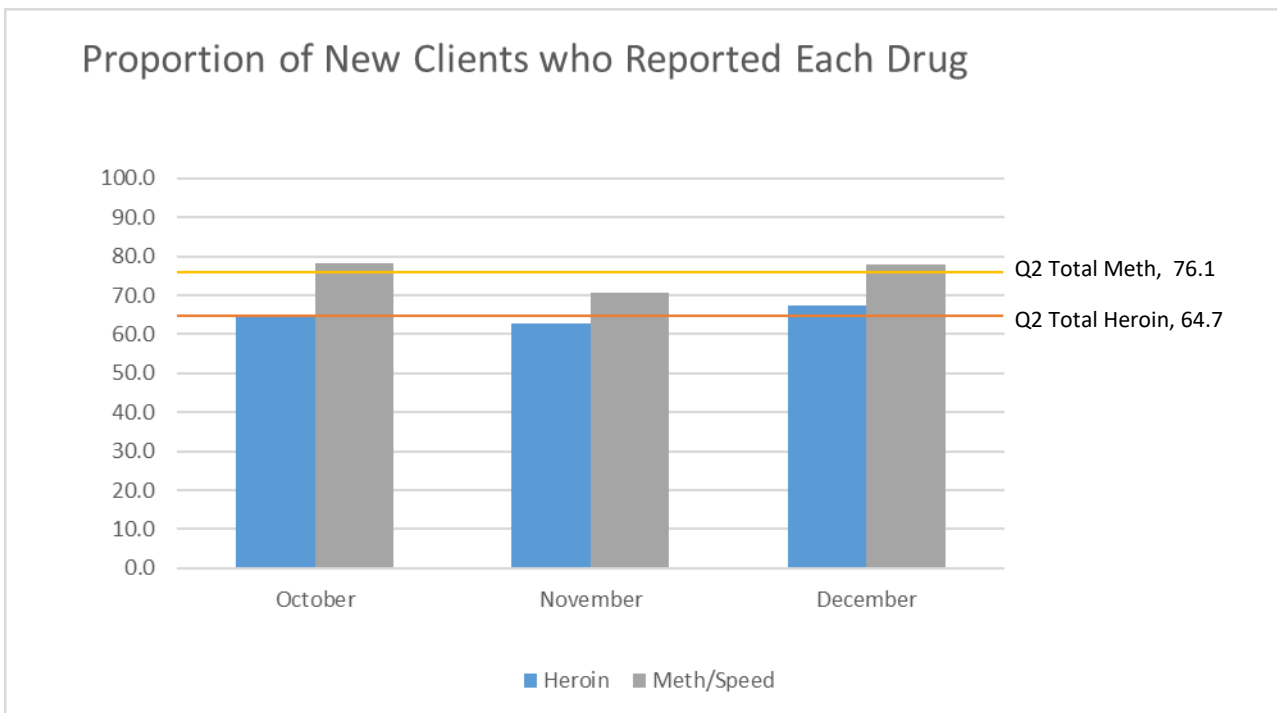


Figure 5. ZIP Code of each Syringe Service Encounter Reported in Quarter 2

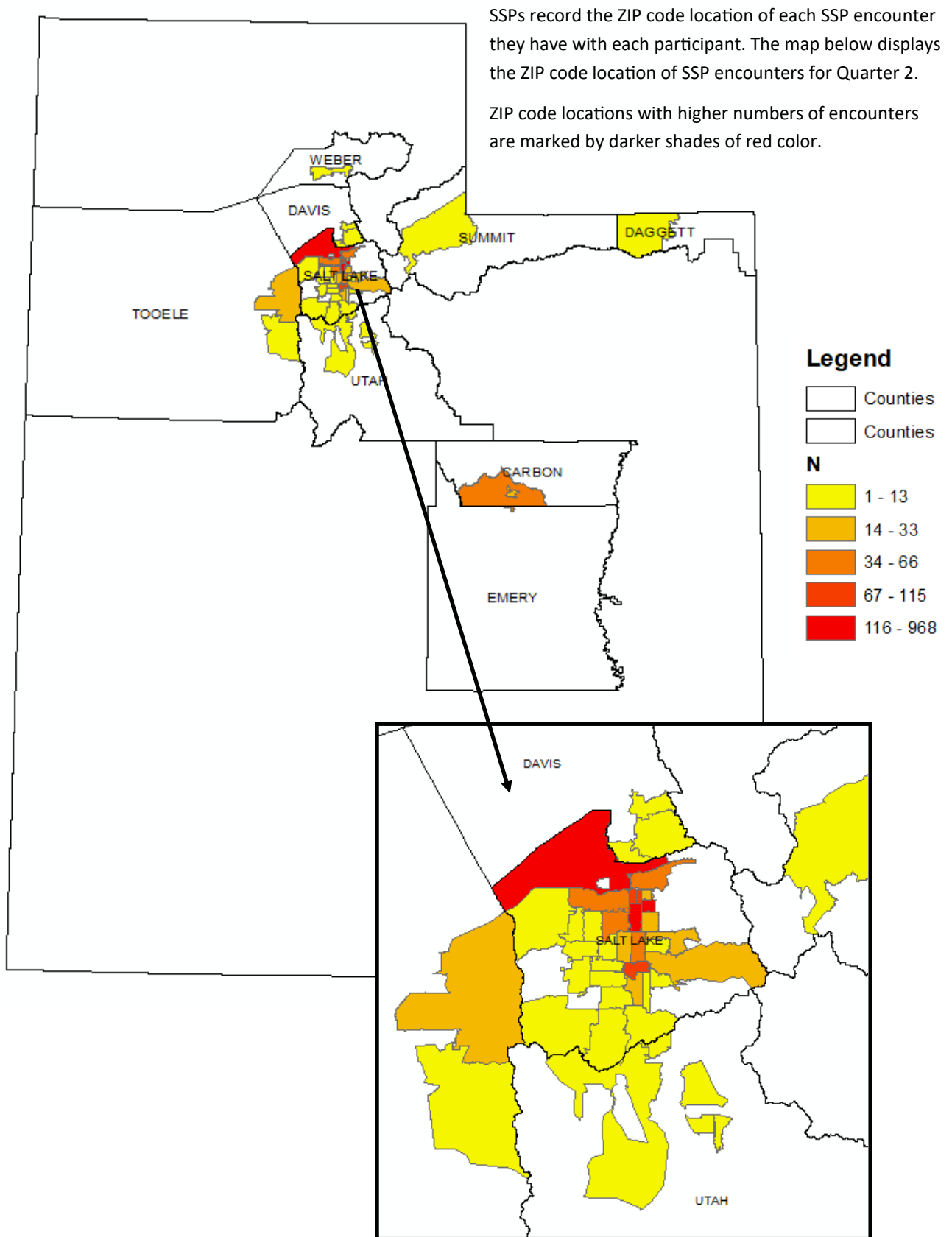


Table 10. ZIP Code of Encounters in Quarter 2

ZIP Code	Number of Encounters	ZIP Code	Number of Encounters
	N		N
84116	968	84128	7
84105	790	84118	7
84115	650	84057	7
84101	115	84011	7
84111	108	84117	6
84047	85	84088	6
84119	66	84062	6
84107	62	84014	6
84501	60	84096	5
84103	57	84095	5
84104	48	84020	5
84121	33	84065	4
84123	30	84044	4
84074	29	84094	3
84070	29	84081	2
84542	27	84054	2
84106	21	84010	2
84114	17	84415	1
84102	17	84401	1
84124	16	84097	1
84084	13	84071	1
84129	12	84046	1
84120	11	84043	1
84016	10	84017	1
84093	8		