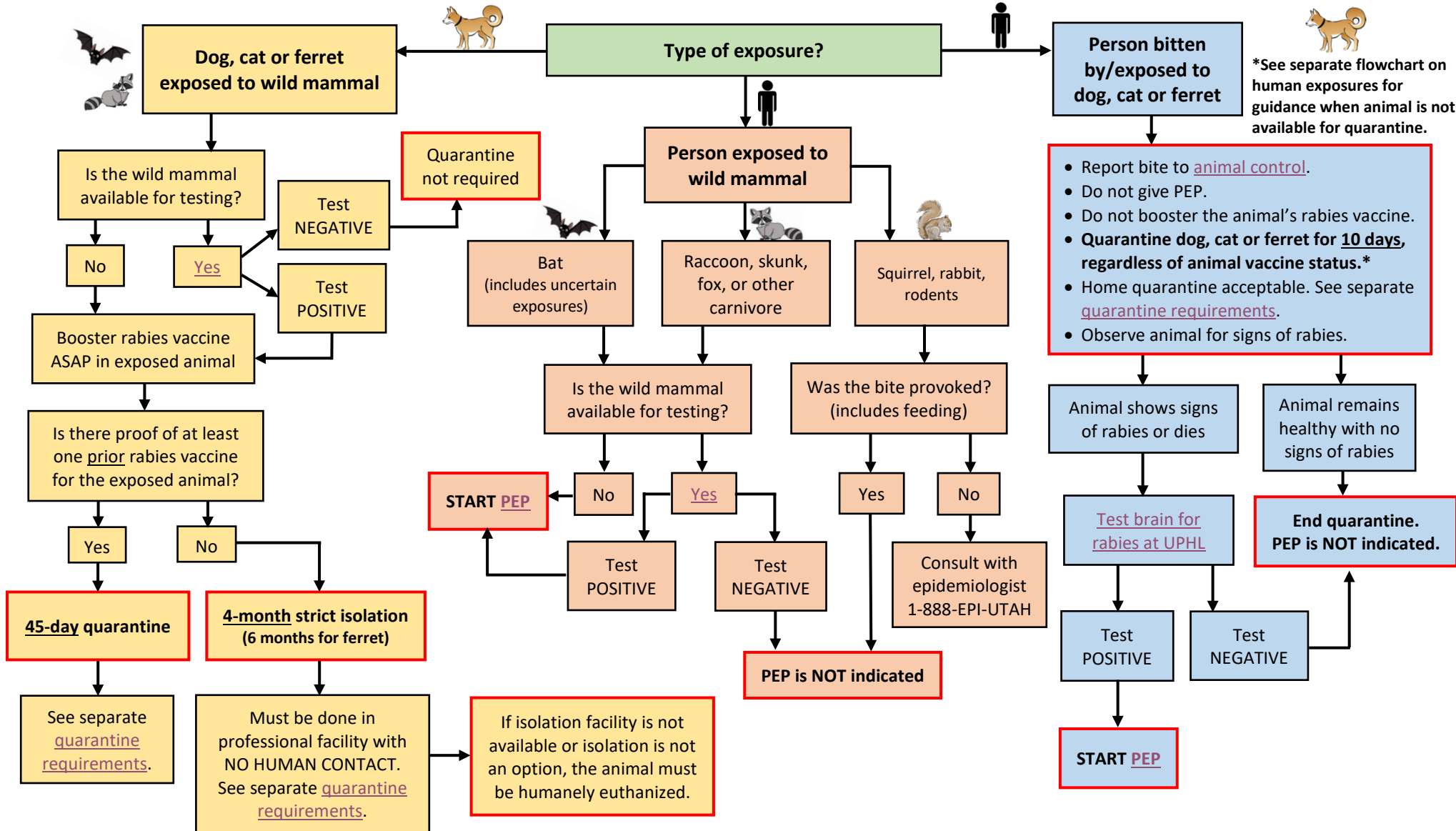


Rabies Prevention Guidelines

This flowchart can be used by rabies response partners or affected individuals to determine the best next steps in rabies prevention.

“Exposure” is defined as a bite, scratch, or any contact with saliva or brain/nervous tissue through open cuts in the skin, scratches, or mucous membranes. Any possibility of contact with a bat is also considered a risk of rabies exposure, since bites or scratches from a bat can be too small to see or feel. If there is uncertainty around exposure (i.e. bat found in a child’s bedroom), proceed as if an exposure did occur.



*See separate flowchart on human exposures for guidance when animal is not available for quarantine.

- Report bite to [animal control](#).
- Do not give PEP.
- Do not booster the animal’s rabies vaccine.
- **Quarantine dog, cat or ferret for 10 days, regardless of animal vaccine status.***
- Home quarantine acceptable. See separate [quarantine requirements](#).
- Observe animal for signs of rabies.