

HAI/AR Monthly Digest

Utah Department of Health Healthcare Associated Infections/Antimicrobial Resistance Program

Issue 6 | January 2022

"Success is the sum of small efforts, repeated day in and day out."

~ Robert Collier

Did you read this month's digest?

[YES](#) [NO](#)

Utah LTCF Situational Update



New UDOH COVID-19 Guidance Documents for LTCFs

New:

- COVID-19 Guidance for Visitors and Leaves of Absence in Long-Term Care Facilities
- Requesting Monoclonal Antibody Treatment for Long-Term Care Facilities
- Monoclonal Antibody Therapy in Long-Term Care FAQ

Updated:

- Visitor Screening Tool

Updates

HAI/AR Update

Booster Doses, Anyone?

- Clinical trials data has shown a booster shot substantially increases the immune response in trial participants who had the two dose series of the Pfizer or Moderna vaccine or the Johnson & Johnson single dose vaccination. The increased immune response improves protection from COVID-19 and its variants, including Omicron. For more information go to: <https://www.cdc.gov/coronavirus/2019-ncov/vaccines/booster-shot.html>
- To schedule a booster clinic, visit: <https://forms.gle/6RMp6BosEdZ8kyr2A>

Reports or Concerns on Weekends or Holidays

- Report your COVID-19 positive staff and residents to the HAI consultant who supports your facility. On weekends and holidays, reach out to HAI@utah.gov for any reports or concerns.

CDC Update

Manage COVID Positive/Exposed Healthcare Workers

- The CDC has updated the Interim Guidance for Managing Healthcare Personnel (HCP) with SARS-CoV-2 Infection or Exposure to SARS-CoV-2.

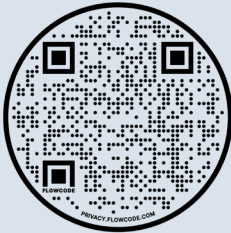
New guidance documents can be found on the Long-Term Care Facilities webpage, under the [For Long-Term Care Facility Providers](#) section.

Mental Health Resources

To find out more about mental health resources offered in Utah, click [here](#).

Questions?

For questions, visit our [Long-Term Care Facilities webpage](#) or email us at hai@utah.gov.



1. Regardless of vaccination status, healthcare personnel who have tested positive should isolate for 10 days or 7 days with a negative antigen test taken within 48 hours of returning to work.
 - a. Individuals who are critically ill or immunocompromised may need to isolate for a longer period of time.
2. Exposures in which HCP are not wearing eye protection or N95s are considered 'higher risk' and may result in work restrictions.
 - For more information, click [here](#).

Updated Mitigating Staffing Shortages

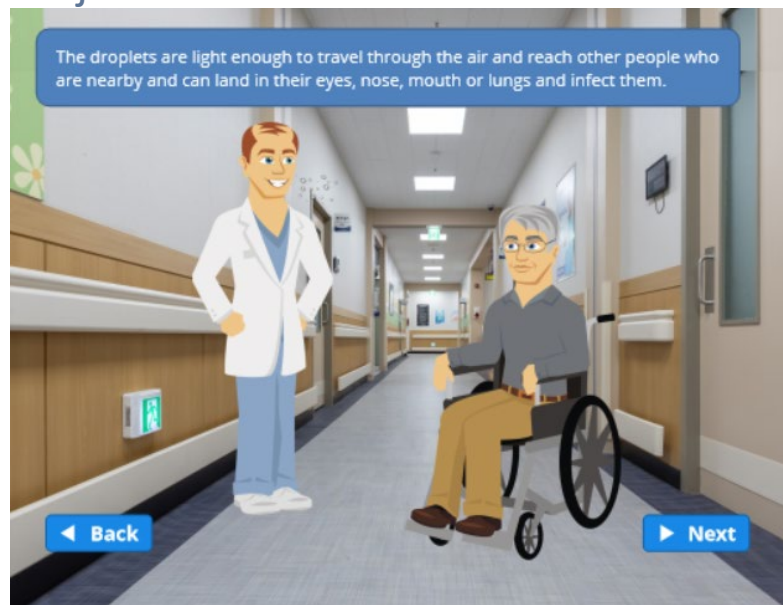
- The CDC has updated recommendations for [mitigating staffing shortages](#). Facilities should follow recommendations in a sequential order and document efforts. Work with your HAI representative or reach out to HAI@utah.gov.

Spotlights

Please send us stories or pictures that highlight the amazing work you and your facility have accomplished during the pandemic. We want to spotlight your successes. Email your HAI/AR contact or hai@utah.gov to share your stories.

Education/Resources

Project Firstline Beta Test



- The Project Firstline Utah team is preparing to beta test Module 1: Infection Prevention Basics. The target audience of this module is frontline staff (CNAs, environmental and dietary staff, receptionists, etc.). If you would like your facility to participate in the beta test, email janellekammerman@utah.gov.

Lab Web Portal

The Utah Public Health Laboratory (UPHL) has launched a Lab Web Portal. This portal allows users to submit and track COVID-19 samples and results sent to UPHL. Effective November 1, 2021, UPHL will only be accepting COVID-19 test requests through the Lab Web Portal and will **no longer** accept spreadsheets. Please see below to access the Lab Web Portal folder, which includes instructions on how to use the Portal for COVID-19 test requests.

- Register for the portal [here](#).
- To view the Lab Web Portal user resource folder, click [here](#) and scroll down to the Lab Web Portal section.

Reporting POC Results (EDX Portal)

Current guidelines require both positive and negative COVID-19 results to be reported within 24 hours of the test (including on weekends). The Utah Department of Health's (UDOH) COVID-19 Test Reporting Portal allows facilities to fulfill requirements under state and federal mandates to report any point-of-care testing performed by their facility (e.g., Abbott BinaxNow, Abbott IDNow, Cepheid, CUE). The COVID-19 Reporting portal allows users two options for reporting.

1. Users can enter results one-by-one by direct data entry.
2. Multiple results can be uploaded at one time through csv import.

The COVID-19 Reporting Portal can be found [here](#). For instructions on how to sign up and report, see the attached pdf.

LTC PAC Project ECHO Sessions

- Join us for the next phase of the Long-Term and Post-Acute Care Project ECHO series starting on Wednesday, January 12, 2022 from 11am to 12pm.

- This session will cover updates on **Omicron** and **current recommendations for monoclonal antibody (mAb) treatments for positive residents**. Speakers will be Angela Weil, APRN/MSN and Jason Spaulding, MD.
 - Register [here](#).
- We would love to have your input on future sessions. Please take [3 minutes to answer our survey!](#)

Antimicrobial Resistance in Utah

Since December 1, 2021

Multidrug Resistant Organisms (MDRO) Big 5 Carbapenamase Producers* and other Producers

Cases: Less than 5	Outbreaks: 0
---------------------------	---------------------

*VIM, IMP, NDM, KPC, OXA-48

Interfacility Transfer Form

- The Utah Department of Health Interfacility Transfer Form should be used when transferring patients to other healthcare facilities, regardless of MDRO status. This form is vital for receiving facilities to understand any potential precautions or infection prevention protocols that need to be enacted upon admission. Use of this form will help reduce the transmission of MDROs. To view the form, click [here](#).

Did you read this month's digest?

[YES](#) [NO](#)

