

# HAI/AR Monthly Digest

Utah Department of Health Healthcare Associated Infections/Antimicrobial Resistance Program

Issue 9 | April 2022

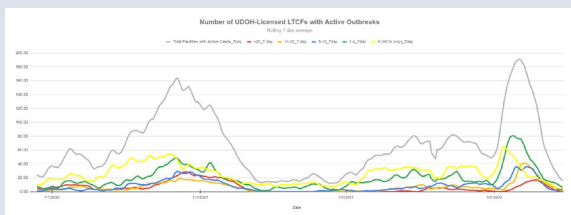
*"Where flowers bloom, so does hope."*

*~ Lady Bird Johnson*

**Did you read this month's digest?**

[YES](#) [NO](#)

## Utah LTCF Situational Update



## New UDOH COVID-19 Guidance Documents for LTCFs

Updated

- COVID-19 visitor passport
- Staff PPE requirements chart
- Optimizing PPE in LTCF
- Preparing to care for residents with COVID-19
- Guidance for therapy animals in LTC
- COVID-19 Rapid Response Recommendations
- Managing Healthcare Personnel in the context of COVID-19

## Updates

### HAI/AR Update

#### HAI Social Media Account

- The UDOH HAI/AR and Disease Response, Evaluation, Analysis, and Monitoring (DREAM) programs teamed up to create a joint social media account. You can follow us on Facebook at Utah DREAM & HAI or on Instagram @Utah.DREAM.HAI.

#### Infection Control Assessment and Response (ICAR)

- The HAI team will provide ICARs to facilities. This resource gives facilities a thorough look at infection prevention and control practices in their facility, to highlight strengths, and discuss ways to improve weaknesses. ICARs are a great resource to help facilities protect their residents and staff.
- The HAI team will reach out soon with details on how to schedule your facility's ICAR.

#### No HAI Weekend Call

- The HAI Infection Preventionists (IP) are returning to their normally scheduled work hours and will no longer have an IP oncall on the weekends.

#### Lab Web Portal Labeling Issue

- Thank you for using the Lab Web Portal to submit COVID-19 specimens to the Utah Public Health Laboratory (UPHL). Recently, there have been issues with facilities using nicknames on the specimen tubes and using the patient's legal name on the test request form (TRF). This causes problems when we process

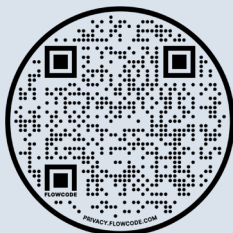
New guidance documents can be found on the Long-Term Care Facilities webpage, under the [For Long-Term Care Facility Providers](#) section.

## Mental Health Resources

To find out more about mental health resources offered in Utah, click [here](#).

## Questions?

For questions, visit our [Long-Term Care Facilities webpage](#) or email us at [hai@utah.gov](mailto:hai@utah.gov).



and report results in the Lab Web Portal. Please make sure the name on the specimen label matches the name on the TRF.

## COVID-19 Reporting Portal

- Reporting Portal users are now required to have multi-factor authentication (MFA) configured prior to accessing the portal. You can choose between entering a code sent to you via [email or text](#), or you may use the [Utah ID Authenticator app](#). If you already have MFA enabled on your account, you do not need to enroll again. For questions, contact [edx@utah.gov](mailto:edx@utah.gov).

## CMS Testing Frequency

- Please use the [CDC COVID Data Tracker](#) to assist with decisions about how often to test staff in your facility. All healthcare facilities, including long term care, must continue to use the community transmission data type rather than COVID-19 community levels.

## Staff Isolation/Quarantine Calculator

- The HAI Team developed a COVID-19 Staff Isolation/Quarantine Calculator that can help facilities make decisions whether staff should isolate or quarantine. The tool can be accessed [here](#).

## Long-Term Care Facility Webpage Update

- The [Long-Term Care Facility Webpage](#) has been updated. Please watch for additional updated guidance documents over the next few weeks.

## CDC Update

### New Mask Sign for Facilities

- Masks Help Protect Everyone—Masks can help protect you and others from COVID-19. [This sign](#) is designed for facilities to print out and place on their entry doors to remind everyone to wear masks in the facility. Learn more about [infection prevention and control recommendations](#) for healthcare personnel during the COVID-19 pandemic

### Project Firstline 2022 Launch of New Resources:

- Risk Recognition and Infection Control in Health Care—Project Firstline is excited to announce the availability of their [newest suite of infection control](#)

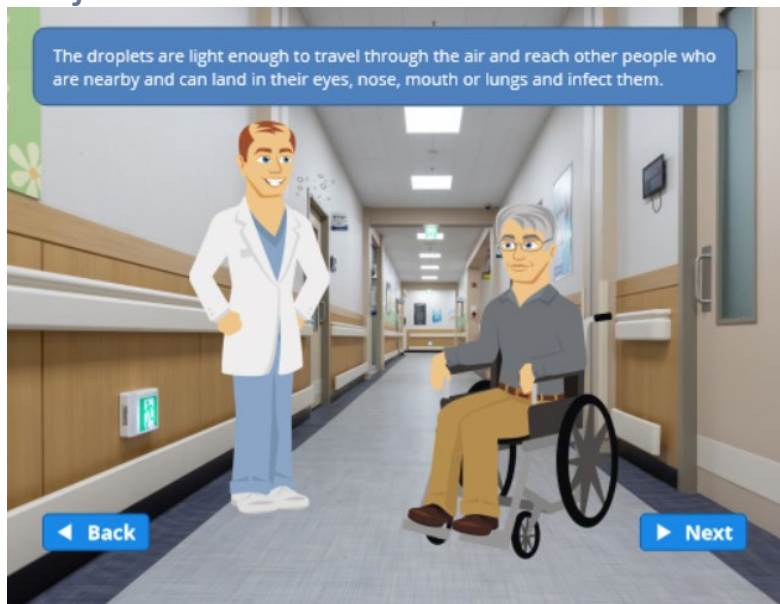
[educational resources and training materials!](#) These new resources are designed to help all healthcare workers gain a foundational understanding of infection control, so they can recognize the risk for germs to spread throughout the workday, and take action to protect patients and themselves—no matter the situation.

## Spotlights

*Please send us stories or pictures to highlight the amazing work you and your facility have accomplished during the pandemic. We want to spotlight your successes. Email your HAI/AR contact or [hai@utah.gov](mailto:hai@utah.gov) to share your stories.*

## Education/Resources

### Project Firstline Beta Test



- The Project Firstline Utah team is nearly ready to beta test Module 1: Infection Prevention Basics. The target audience of this module is frontline staff (CNAs, environmental and dietary staff, receptionists, etc.). If you would like your facility to participate in the beta test, email [janellekammerman@utah.gov](mailto:janellekammerman@utah.gov).

# Policy Dialogue for the Future of Nursing Home Quality



Wednesday, April 13<sup>th</sup>, 4:30-5:30 PM EST

[Register here](#)

Join us for an expert panel on the National Academies of Sciences, Engineering, & Medicine's 2022 Report "The Quality of Care in Nursing Homes"

## Featuring

Robert Weech-Maldonado, PhD, MBA

Betty Ferrell, PhD, FAAN, FPCN, CHPN

Jasmine Travers, '16 PhD, MHS, RN

Colleen Galambos, PhD, LCSW, LCSW-C, ACSW, FGSA

Marilyn Rantz, PhD, RN, FAAN

David Grabowski, PhD

Greg Alexander, PhD, RN, FAAN, FACMI, FIAHSI

## Hosted by

- Center for Health Policy
- Center for Improving Palliative Care in Vulnerable Adults with Multiple Chronic Conditions
- Office of Development & Alumni Relations

 **COLUMBIA**  
SCHOOL OF NURSING

To register for this event, please visit:

[https://columbiauniversity.zoom.us/webinar/register/WN\\_LNM\\_bE78So6PxnYYPGCmPQ](https://columbiauniversity.zoom.us/webinar/register/WN_LNM_bE78So6PxnYYPGCmPQ)

## Mental Health Resources

- The Agency for Healthcare Research and Quality (AHRQ) created 5-minute learning modules for frontline staff about emotional health and resilience. To access these modules, click [here](#).

## LTC PAC Project ECHO Sessions

- Join us for the next Long-Term and Post-Acute Care Project ECHO presentation on Wednesday, **April 13, 2022** from **11 am to 12 pm**
  - Anne Asman, MS, gerontologist and program manager at the Geriatric Psychiatry Clinic, will present on mental health services available to residents, as well as issues relating to dementia, loneliness, and social isolation.
  - Register [here](#).
- We would love to have your input on future sessions. Please take [3 minutes to answer our survey!](#)

## Antimicrobial Resistance in Utah

*Since March 1, 2022*

### Multidrug Resistant Organisms (MDRO) Big 5 Carbapenemase Producers\* and other Producers

<b>Cases: Less Than 5</b>	<b>Outbreaks: 0</b>
---------------------------	---------------------

\*VIM, IMP, NDM, KPC, OXA-48

## Interfacility Transfer Form

- The Utah Department of Health Interfacility Transfer Form should be used when transferring patients to other healthcare facilities, regardless of MDRO status. This form is vital to help receiving facilities understand any potential precautions or infection prevention protocols necessary upon admission. Use of this form will help reduce the transmission of MDROs. To view the form, click [here](#).

**Did you read this month's digest?**

[YES](#) [NO](#)

To stop receiving the HAI/AR Monthly Digest, please reply to this email or email [janellekammerman@utah.gov](mailto:janellekammerman@utah.gov) directly.  
Thank you.

