



Influenza vaccination coverage report for healthcare workers 2024-2025

Utah Department of Health and Human Services
Healthcare associated infections/antimicrobial resistance (HAI/AR) program

Acknowledgements

Prepared by

Janelle Kammerman
HAI/AR epidemiologist
Office of Communicable Diseases
Utah Department of Health and Human Services

Justin Morales, MPH
HAI/AR epidemiologist
Office of Communicable Diseases
Utah Department of Health and Human Services

Special thanks to the following individuals for their subject matter expertise, data resources, data analysis, editing, and consultations.

Utah Department of Health and Human Services

State Epidemiologist

Leisha Nolen, MD, Ph.D.

Healthcare-Associated Infections/Antimicrobial Resistance Prevention Program

April Clements, BSN, RN, CIC	Jonny Griffith, RN
Angela Weil, APRN/MSN, CIC	Justin Morales, MPH
Beatrice Jensen, BSN, RN, CIC	Linda Rider, BSN, CIC
Christina Radloff, Ph.D., RN, CIC	Sarah Rigby, MPH, CPH
Devin Beard, MPH	Susan Cheever, BS, CHES
Janelle Kammerman, BS	Tariq Mosleh, Pharm D, Ph.D.

Utah Hospitals

Chief executive officers
Infection preventionists
Chief medical officers

Chief nursing officers
Quality improvement directors

Suggested Citation: Utah Department of Health and Human Services, *Influenza Vaccination Coverage Report for Healthcare Personnel in Utah Hospitals*. Salt Lake City, UT: Utah Department of Health and Human Services; December 2025. http://health.utah.gov/epi/diseases/HAI/HCW_flu/2024-2025_HCW_Influenza_Rpt.pdf.

Table of contents

Executive summary	1
Why this data matters	2
Figures and tables	3
References	14

Executive summary

Vaccination rates of healthcare workers in hospitals have declined in recent years. The influenza vaccination rate in Utah licensed hospitals for healthcare workers declined from a peak of 96.7% in 2014-15 to 87% in 2022-23.

Utah Administrative Rule 386-705-1 requires hospitals to report influenza (flu) vaccination rates of healthcare workers to the National Healthcare Safety Networks (NHSN). Annual review of these data shows current trends.

- In the 2024–2025 season in Utah, 91.5% of licensed hospital healthcare workers were vaccinated for flu.
- Flu vaccination rates among healthcare workers who worked in licensed hospitals in Utah varied by public health jurisdiction. Vaccination rates ranged from 37.4% to 94.6%.

The Utah Department of Health and Human Services (DHHS) does not require Utah hospitals to have a flu vaccine policy requirement for healthcare workers. However, some Utah healthcare facilities have such policies in place. Healthcare facilities that have a flu vaccine policy requirement have a higher rate of vaccinated healthcare workers than those who do not have a vaccination requirement (See Figure 2 below).

The DHHS and the Utah Healthcare Infection Prevention Governance Committee (UHIP-GC) know that flu vaccination for healthcare workers is critical for patient safety practices. They continue to support required flu vaccination for workers in all healthcare facilities. For long-term care facility healthcare worker influenza vaccination information, see the [DHHS Immunizations program report](#). The DHHS continues to encourage healthcare facilities to achieve flu vaccination rates for workers of 95% or greater.

Why this data matters

Influenza (flu) is a contagious respiratory illness that can cause severe illness, hospitalization, or even death. The CDC estimates that the flu caused 40,000,000 infections, 470,000 hospitalizations, and 28,000 deaths during the 2023-2024 season (CDC, 2023). Healthcare workers can be exposed to the flu when they work with sick patients or handle material that could spread infection.

Suggested Citation: Utah Department of Health and Human Services, *Influenza Vaccination Coverage Report for Healthcare Personnel in Utah Hospitals*. Salt Lake City, UT: Utah Department of Health and Human Services; December 2025. http://health.utah.gov/epi/diseases/HAI/HCW_flu/2024-2025_HCW_Influenza_Rpt.pdf.

A systematic review from 2022 found that 20-75% of employees miss work due to influenza-like illness (ILI) for an average of 2-3 days. The review also cited that approximately 60-80% of employees reported working while experiencing ILI symptoms. This may cause a risk of spreading ILI to vulnerable individuals and can affect their recovery and productivity. Overall, the review found that vaccinated employees missed time from work less when compared to unvaccinated peers. Seasonal flu is an expensive illness for patients, employers, and society in terms of direct and indirect medical costs and lost productivity (Blanchet et al., 2023).

Yearly flu vaccination for healthcare workers is recommended by many national organizations, including the Centers for Disease Control and Prevention (CDC), Infectious Disease Society of America (ISDA), American Academy of Pediatrics (AAP), American Hospital Association (AHA), and the Association for Professionals in Infection Control and Epidemiology (APIC). These recommendations work to reduce the likelihood of healthcare workers getting or spreading the flu.

Healthcare workers being vaccinated against the flu is a safety practice that should be recommended in all healthcare facilities. Evidence shows healthcare worker flu vaccination reduces patient infections and deaths. Facilities that have created such policies have higher healthcare worker vaccination rates. Utahns have the right to expect their healthcare workers will not make them sick from flu or other preventable infections (Ledda et al., 2023).

Figures and tables

Figure 1. Influenza vaccination coverage rates for healthcare workers in licensed hospitals by influenza season, Utah, 2008–2024

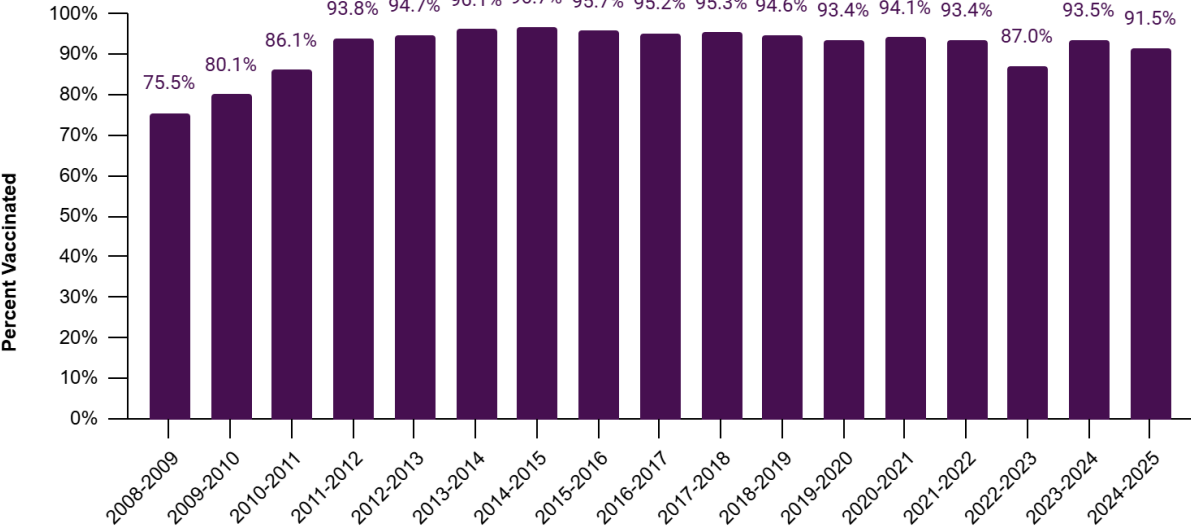


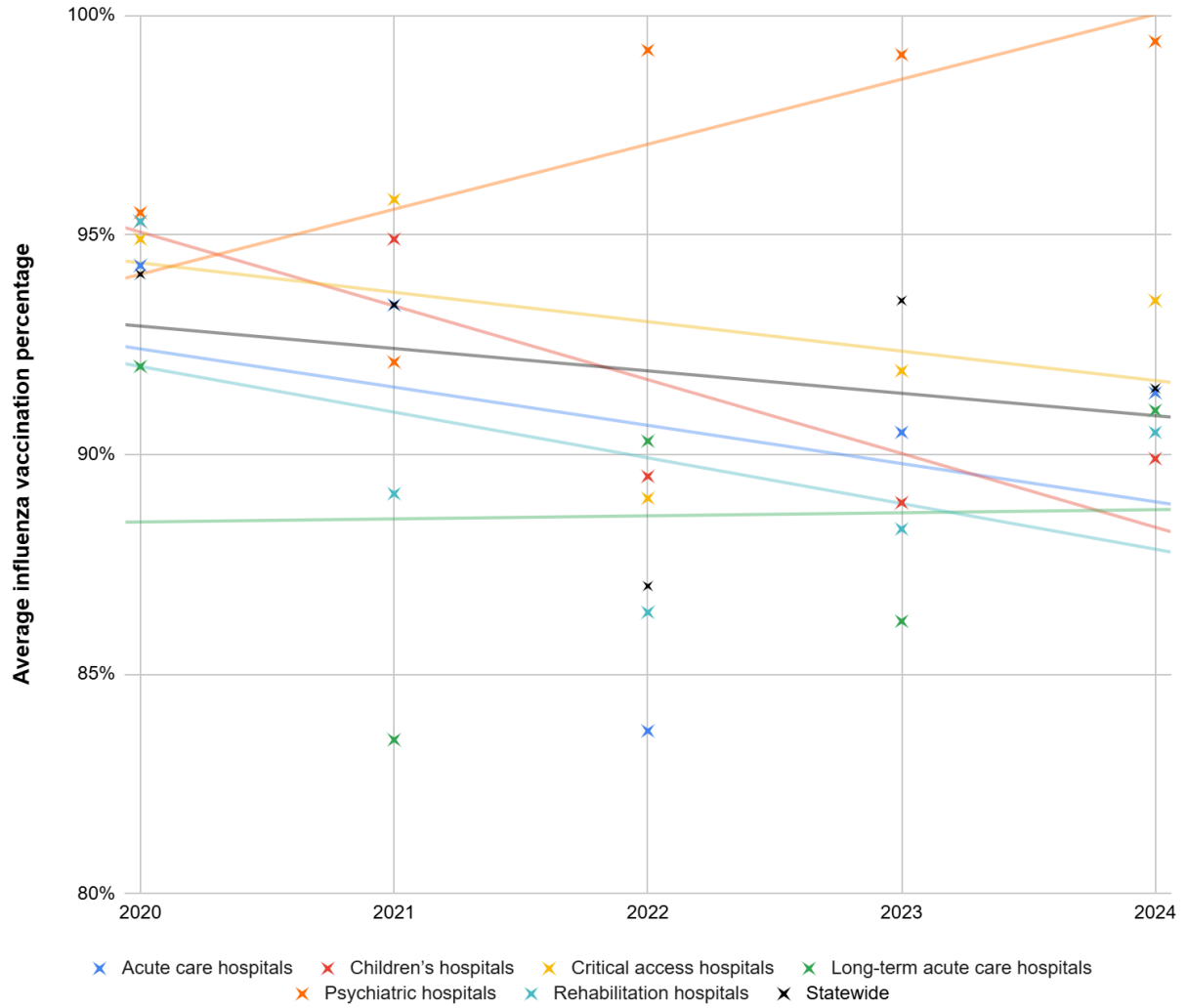
Table 1. Influenza vaccination coverage for healthcare workers (HCW) in licensed hospitals by hospital type, Utah, 2024-2025 influenza season

NOTE: Did not report = DNR

	Number of reporting hospitals/Number of hospitals	Average HCW vaccination percentage	Five-year trend
Acute care hospitals	36/36	91.5%	▼
Children’s hospitals	1/1	89.9%	▼
Critical access hospitals	11/13	93.5%	▼
Government hospitals	0/1	DNR	DNR
Long-term acute care hospitals	3/3	91.1%	▲
Psychiatric hospitals	1/9	99.4%	▲
Rehabilitation hospitals	2/2	90.5%	▼

Suggested Citation: Utah Department of Health and Human Services, *Influenza Vaccination Coverage Report for Healthcare Personnel in Utah Hospitals*. Salt Lake City, UT: Utah Department of Health and Human Services; December 2025. http://health.utah.gov/epi/diseases/HAI/HCW_flu/2024-2025_HCW_Influenza_Rpt.pdf.

Figure 2. Influenza vaccination 5-year trend comparing vaccination rates by hospital type in Utah, 2020-2025



Suggested Citation: Utah Department of Health and Human Services, *Influenza Vaccination Coverage Report for Healthcare Personnel in Utah Hospitals*. Salt Lake City, UT: Utah Department of Health and Human Services; December 2025. http://health.utah.gov/epi/diseases/HAI/HCW_flu/2024-2025_HCW_Influenza_Rpt.pdf.

Figure 3. Influenza vaccination coverage percentage for healthcare workers in licensed hospitals by influenza vaccination requirement, Utah, 2024-2025 influenza season

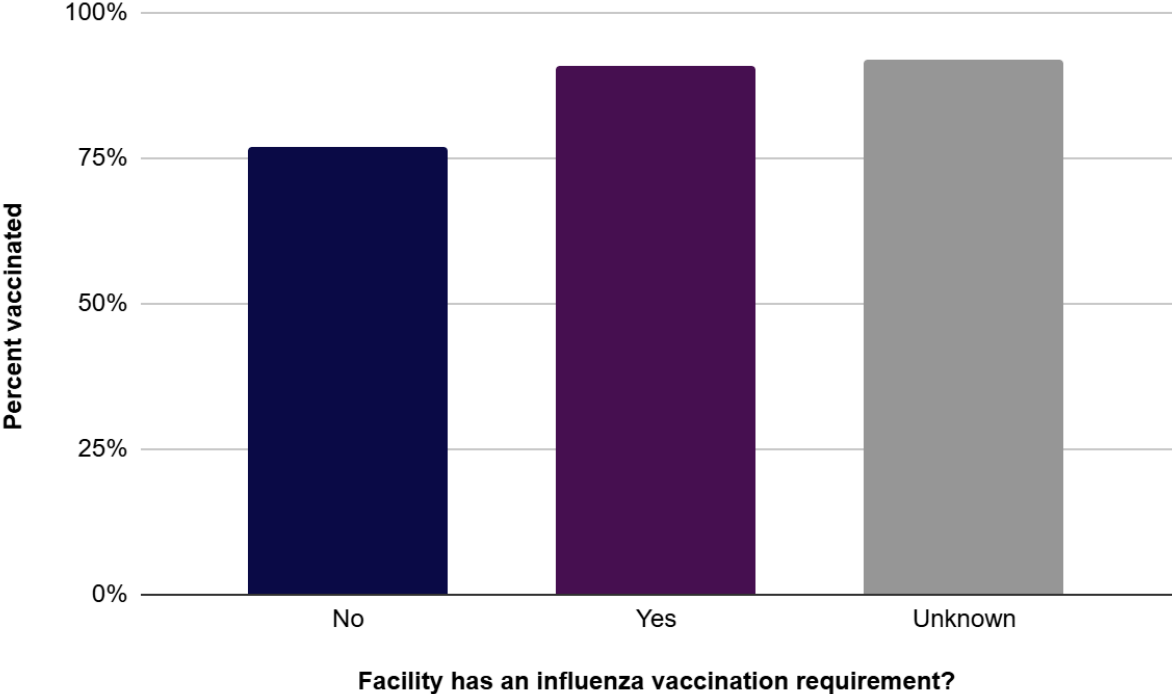


Table 2. Influenza vaccination coverage among healthcare workers in reporting hospitals, Utah 2024-2025 influenza season.

Percentage of hospitals reporting	Statewide HCW vaccination coverage	Range of HCW vaccination coverage by public health district	Range of HCW vaccination coverage by hospital
83.1%	91.5%	37.4 - 94.6%	37.4 - 99.4%

Suggested Citation: Utah Department of Health and Human Services, *Influenza Vaccination Coverage Report for Healthcare Personnel in Utah Hospitals*. Salt Lake City, UT: Utah Department of Health and Human Services; December 2025. http://health.utah.gov/epi/diseases/HAI/HCW_flu/2024-2025_HCW_Influenza_Rpt.pdf.

Table 3. Influenza vaccination coverage rates for healthcare workers in licensed hospitals by public health district, Bear River Health District—Box Elder, Cache, Rich counties, 2024-2025 influenza season

	Number of HCW	Vaccinated HCW	Vaccination percentage
State of Utah coverage for hospitals	116,795	106,843	91.5%
Licensed hospitals in Bear River	4,852	4,259	87.8%
Bear River Valley Hospital	939	897	95.5%
Logan Regional Hospital	3,013	2,721	90.3%
Brigham City Community Hospital	449	338	75.3%
Cache Valley Hospital	451	303	67.2%

Table 4. Influenza vaccination coverage rates for healthcare workers in licensed hospitals by public health district, Central Utah Health District—Juab, Millard, Sanpete, Sevier, Piute, Wayne counties, 2024-2025 influenza season

	Number of HCW	Vaccinated HCW	Vaccination percentage
State of Utah coverage for hospitals	116,795	106,843	91.5%
Licensed hospitals in Central Utah	4,188	3,957	94.5%
Delta Community Medical Center	733	709	96.7%
Sevier Valley Medical Center	1,147	1,085	94.6%
Fillmore Community Medical Center	739	699	94.6%
Central Valley Medical Center	358	338	94.4%
Gunnison Valley Hospital	290	270	93.1%
Sanpete Valley Hospital	921	856	92.9%

Table 5. Influenza vaccination coverage rates for healthcare workers in licensed hospitals by public health district, Davis County Health District—Davis County, 2024-2025 influenza season

NOTE: Did not report = DNR

	Number of HCW	Vaccinated HCW	Vaccination percentage
State of Utah coverage for hospitals	116,795	106,843	91.5%
Licensed hospitals in Davis	5,331	4,827	90.5%
Layton Hospital	2,344	2,159	92.1%
Holy Cross Hospital - Davis	1,558	1,429	91.7%
Western Peaks Specialty Hospital	343	307	89.5%
Lakeview Hospital	1,086	932	85.8%
Benchmark Behavioral Health Systems	DNR	DNR	N/A
ViewPoint Center	DNR	DNR	N/A

Table 6. Influenza vaccination coverage rates for healthcare workers in licensed hospitals by public health district, Salt Lake County Health District—Salt Lake County, 2024-2025 influenza season

NOTE: Did not report = DNR

	Number of HCW	Vaccinated HCW	Vaccination percentage
State of Utah coverage for hospitals	116,795	106,843	91.5%
Licensed hospitals in Salt Lake	61,955	57,631	93.0%
Huntsman Mental Health Institute	1,168	1,161	99.4%
Huntsman Cancer Hospital	2,382	2,362	99.2%
University Health Care Hospitals and Clinics	17,626	17,324	98.3%
Jordan Valley Medical Center	2,001	1,961	98.0%

Suggested Citation: Utah Department of Health and Human Services, *Influenza Vaccination Coverage Report for Healthcare Personnel in Utah Hospitals*. Salt Lake City, UT: Utah Department of Health and Human Services; December 2025. http://health.utah.gov/epi/diseases/HAI/HCW_flu/2024-2025_HCW_Influenza_Rpt.pdf.

Table 6, continued.

	Number of HCW	Vaccinated HCW	Vaccination percentage
Jordan Valley Medical Center—West Valley Campus	1,490	1,436	96.4%
KPC Promise Hospital of Salt Lake	189	182	96.3%
Salt Lake Regional Medical Center	759	707	93.1%
Alta View Hospital	2,887	2,665	92.3%
LDS Hospital	4,734	4,339	91.7%
Riverton Hospital	3,493	3,204	91.7%
Intermountain Medical Center	12,293	11,235	91.4%
Encompass Health Rehabilitation Hospital of Utah	282	257	91.1%
Primary Children’s Hospital	8,945	8,040	89.9%
Lone Peak Hospital	1,217	967	79.5%
St. Mark’s Hospital	2,489	1,791	72.0%
The Orthopedic Specialty Hospital	DNR	DNR	N/A
Highland Ridge	DNR	DNR	N/A
Marian Center	DNR	DNR	N/A
Salt Lake Behavioral Health	DNR	DNR	N/A
Veterans Affairs Medical Center	DNR	DNR	N/A

Suggested Citation: Utah Department of Health and Human Services, *Influenza Vaccination Coverage Report for Healthcare Personnel in Utah Hospitals*. Salt Lake City, UT: Utah Department of Health and Human Services; December 2025. http://health.utah.gov/epi/diseases/HAI/HCW_flu/2024-2025_HCW_Influenza_Rpt.pdf.

Table 7. Influenza vaccination coverage rates for healthcare workers in licensed hospitals by public health district, San Juan County Health District—San Juan County, 2024-2025 influenza season

NOTE: Did not report = DNR

	Number of HCW	Vaccinated HCW	Vaccination percentage
State of Utah coverage for hospitals	116,795	106,843	91.5%
Licensed hospitals in San Juan	87	80	92.0%
San Juan Hospital	87	80	92.0%
Blue Mountain Hospital	DNR	DNR	N/A

Table 8. Influenza vaccination coverage rates for healthcare workers in licensed hospitals by public health district, Southeastern Utah Health District—Carbon, Emery, Grand counties, 2024-2025 influenza season

NOTE: Did not report = DNR

	Number of HCW	Vaccinated HCW	Vaccination percentage
State of Utah coverage for hospitals	116,795	106,843	91.5%
Licensed hospitals in Southeastern	439	412	93.8%
Castleview Hospital	439	412	93.8%
Moab Regional Hospital	DNR	DNR	N/A

Table 9. Influenza vaccination coverage rates for healthcare workers in licensed hospitals by public health district, Southwest Utah Health District—Beaver, Garfield, Iron, Kane, Washington counties, 2024-2025 influenza season

	Number of HCW	Vaccinated HCW	Vaccination percentage
State of Utah coverage for hospitals	116,795	106,843	91.5%
Licensed hospitals in Southwestern	9,504	8,477	89.2%
Garfield Memorial Hospital	710	693	97.6%
Milford Memorial Hospital	68	63	92.6%
Beaver Valley Hospital	159	147	92.5%
Cedar City Hospital	1,932	1,784	92.3%
St. George Regional Hospital	6,450	5,681	88.1%
Kane County Hospital	185	109	58.9%

Table 10. Influenza vaccination coverage rates for healthcare workers in licensed hospitals by public health district, Summit County Health District—Summit County, 2024-2025 influenza season

	Number of HCW	Vaccinated HCW	Vaccination percentage
State of Utah coverage for hospitals	116,795	106,843	91.5%
Licensed hospitals in Summit	1,526	1,430	93.7%
Park City Medical Center	1,526	1,430	93.7%

Table 11. Influenza vaccination coverage rates for healthcare workers in licensed hospitals by public health district, Tooele County Health District—Tooele County, 2024-2025 influenza season

	Number of HCW	Vaccinated HCW	Vaccination percentage
State of Utah coverage for hospitals	116,795	106,843	91.5%
Licensed hospitals in Tooele	644	241	37.4%
Mountain West Medical Center	644	241	37.4%

Table 12. Influenza vaccination coverage rates for healthcare workers in licensed hospitals by public health district, TriCounty Health District—Daggett, Duchesne, Uintah counties, 2024-2025 influenza season

	Number of HCW	Vaccinated HCW	Vaccination percentage
State of Utah coverage for hospitals	116,795	106,843	91.5%
Licensed hospitals in TriCounty	1,726	1,568	90.8%
Ashley Regional Medical Center	444	406	91.4%
Uintah Basin Medical Center	1,282	1,162	90.6%

Table 13. Influenza vaccination coverage rates for healthcare workers in licensed hospitals by public health district, Utah County Health District—Utah County, 2024-2025 influenza season

NOTE: Did not report = DNR

	Number of HCW	Vaccinated HCW	Vaccination percentage
State of Utah coverage for hospitals	116,795	106,843	91.5%
Licensed hospitals in Utah County	17,333	15,684	90.5%
Holy Cross Hospital—Mountain Point	1,483	1,421	95.8%
Utah State Hospital	1,016	962	94.7%

Table 13, continued.

	Number of HCW	Vaccinated HCW	Vaccination percentage
Orem Community Hospital	1,235	1,163	94.2%
American Fork Hospital	3,032	2,827	93.2%
Spanish Fork Hospital	1,680	1,563	93.0%
Utah Valley Regional Medical Center	7,512	6,702	89.2%
Utah Valley Specialty Hospital	236	210	89.0%
Mountain View Hospital	371	310	83.6%
Timpanogos Regional Hospital	768	526	68.5%
Aspen Grove Behavioral Hospital	DNR	DNR	N/A
Center for Change Inc	DNR	DNR	N/A
Utah State Hospital	DNR	DNR	N/A

Table 14. Influenza vaccination coverage rates for healthcare workers in licensed hospitals by public health district, Wasatch County Health District—Wasatch County, 2024-2025 influenza season

	Number of HCW	Vaccinated HCW	Vaccination percentage
State of Utah coverage for hospitals	116,795	106,843	91.5%
Licensed hospitals in Wasatch	1,157	1,094	94.6%
Heber Valley Medical Center	1,157	1,094	94.6%

Table 15. Influenza vaccination coverage rates for healthcare workers in licensed hospitals by public health district, Weber-Morgan Health District—Weber, Morgan counties, 2024-2025 influenza season

	Number of HCW	Vaccinated HCW	Vaccination percentage
State of Utah coverage for hospitals	116,795	106,843	91.5%
Licensed hospitals in Weber-Morgan	8,366	7,488	86.5%
McKay-Dee Hospital	6,510	5,981	91.9%
Northern Utah Rehabilitation Hospital	148	132	89.2%
Ogden Regional Medical Center	1,708	1,375	80.5%

Suggested Citation: Utah Department of Health and Human Services, *Influenza Vaccination Coverage Report for Healthcare Personnel in Utah Hospitals*. Salt Lake City, UT: Utah Department of Health and Human Services; December 2025. http://health.utah.gov/epi/diseases/HAI/HCW_flu/2024-2025_HCW_Influenza_Rpt.pdf.

References

Blanchet Zumofen, M. H., Frimpter, J., & Hansen, S. A. (2023). Impact of Influenza and Influenza-Like Illness on Work Productivity Outcomes: A Systematic Literature Review. *PharmacoEconomics*, 41(3), 253–273. <https://doi.org/10.1007/s40273-022-01224-9>

Centers for Disease Control and Prevention [CDC]. (2023). *About estimated flu burden*. Retrieved from February 2025, from <https://www.cdc.gov/flu-burden/php/about/index.html>

Ledda, C., Motta, G., Rapisarda, V., Maltezou, H. C. (2023). Influenza immunization of healthcare personnel in the post-COVID-19 pandemic era: Still a lot to do!. *Vaccine: X*, 15. ScienceDirect. <https://doi.org/10.1016/j.jvacx.2023.100402>

Suggested Citation: Utah Department of Health and Human Services, *Influenza Vaccination Coverage Report for Healthcare Personnel in Utah Hospitals*. Salt Lake City, UT: Utah Department of Health and Human Services; December 2025. http://health.utah.gov/epi/diseases/HAI/HCW_flu/2024-2025_HCW_Influenza_Rpt.pdf.